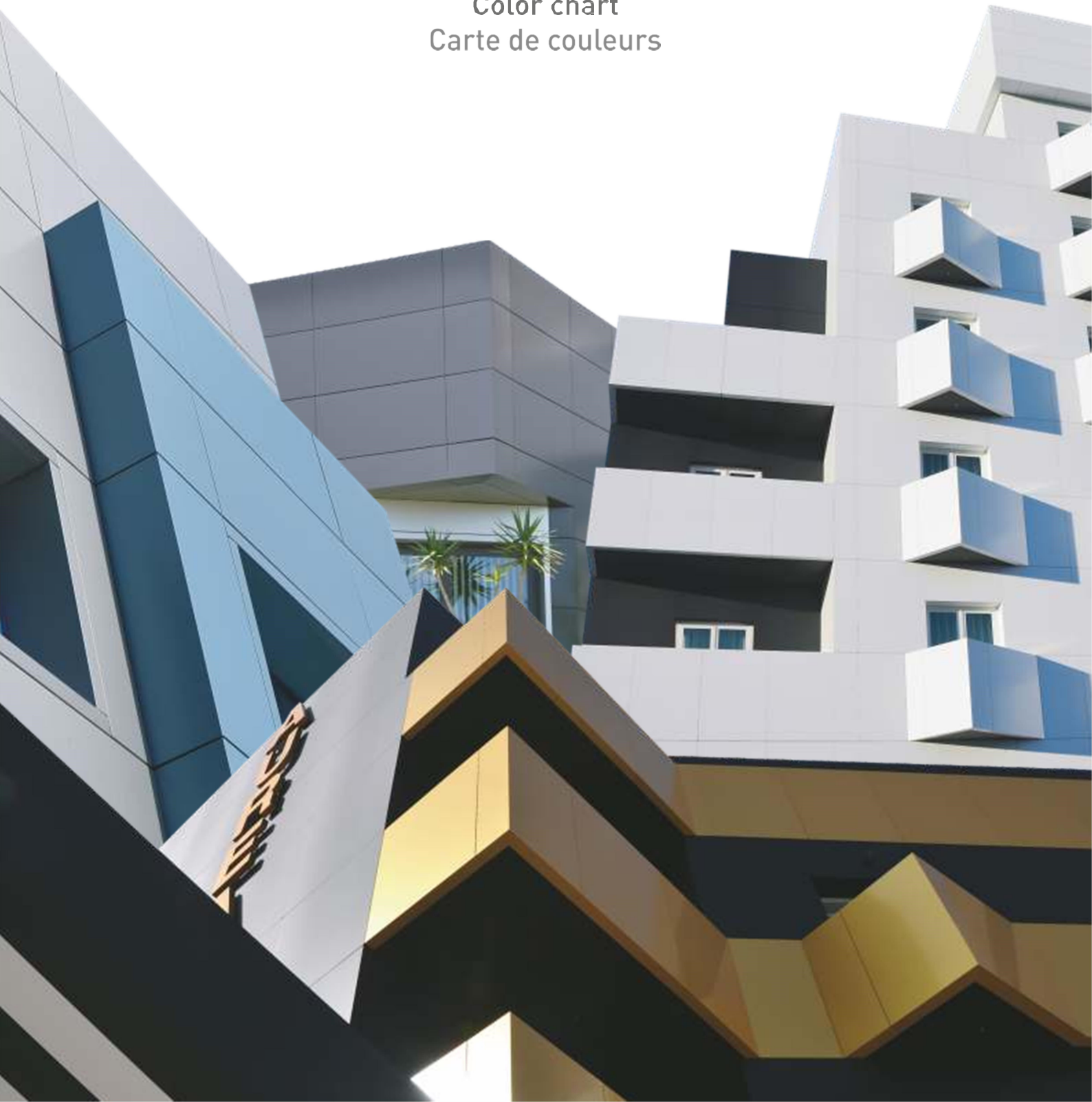


BY MERCANTLIS<sup>®</sup>

# FIXbond

ALUMINIUM COMPOSITE PANEL

Carta de cores  
Color chart  
Carte de couleurs



O painel **FIXBOND®FR** foi desenvolvido para satisfazer as mais elevadas exigências da legislação em vigor contra o fogo. O seu núcleo interno de resinas termoplásticas (polietileno de baixa densidade e retardadores de chama) tem a classificação ao fogo B-S1,d0 de acordo com a norma UNE-EN-13501-1:2007.

The **FIXBOND®FR** panel has been developed to comply with the highest demands from current norms for fire protection. Its internal core consisting of thermoplastic resins (low density polyethylene and fire retardant) has a fire classification of B-S1,d0 according to UNE-EN-13501-1:2007.

Le panneau **FIXBOND®FR** a été développé pour répondre aux plus grandes exigences de la réglementation en vigueur contre le feu. Son noyau intérieur en résines thermoplastiques (polyéthylène à faible densité et retardateur au feu) possède la classification au feu B-S1,d0 conforme à la norme UNE-EN-13501-1:2007.



**FIXBOND®A2** é um painel composto não combustível composto por duas folhas de alumínio e um núcleo mineral. O seu núcleo mineral possui a classificação de ao fogo reacção ao fogo A2-s1, d0 de acordo com a norma UNE-EN-13501-1:2007.

**FIXBOND®A2** is a non-combustible composite panel composed of two aluminium sheets and a mineral core. Its mineral core has fire classification A2-s1, d0 according to the UNE-EN-13501-1:2007 standard. It has excellent mechanical properties, among which are: excellent rigidity, excellent flatness, impact resistance, durability and ease of maintenance.

**FIXBOND®A2** est un panneau composite incombustible composé de deux feuilles d'aluminium et d'un noyau minérale. Son noyau minéral est classé au feu A2-s1, d0 selon la norme UNE-EN-13501-1:2007.

Il possède d'excellentes propriétés mécaniques, parmi lesquelles se distinguent: une excellente rigidité, une excellente planéité, une résistance aux chocs, une durabilité et une facilité d'entretien.

- Protective filme
- Protective Varnish
- PVDF 70/30 Paint
- Primary
- 0.5mm aluminium (5005 alloy)
- Adhesive
- Mineral Core
- Adhesive
- 0.5mm aluminium (3105 alloy)
- Primary (Epoxy-based)

O painel **FIXBOND®** possui uma camada exterior de liga de alumínio 3005/ 3105/ 5005, sendo revestido com pintura da mais alta qualidade PvdF Kynar® 500 70/30 (fluoreto de vinilo), o que proporciona a maior resistência ao envelhecimento. O fabrico do painel compósito **FIXBOND®** segue um processo controlado por rigorosos testes e controlo de qualidade.

The **FIXBOND®** panel has an external aluminium alloy 3005/ 3105/ 5005 sheet and is coated with the highest quality PvdF Kynar® 500 70/30 paint (polyvinyl fluoride) that offers the highest resistance to ageing. The manufacture of **FIXBOND®** Composite Panel follows a controlled process by way of rigorous tests and quality controls.

Le panneau **FIXBOND®** avec une couche extérieure en alliage d'aluminium 3005/ 3105/ 5005 et laqué à la peinture PvdF Kynar® 500 70/30 (polyvinyle fluoré), offre une haute résistance au vieillissement. La fabrication du Panneau Composite **FIXBOND®** répond à un processus de contrôle rigoureux validé par des essais et des audits de qualité.



**A2 & FR cores**  
Núcleos A2 y FR  
Noyaux A2 et FR



**High resistance to UV rays**  
Alta resistencia a rayos UV  
Haute résistance aux rayons UV



**Excellent weight/surface value**  
Excelente relación peso/superficie  
Excellent rapport poids/surface



**Easily conformable**  
Fácilmente conformable  
Facilement conforme



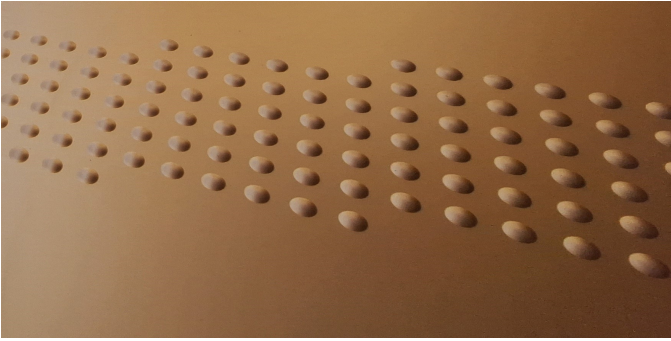
**Rapid and simple assembly**  
Montaje rápido y sencillo  
Montage simple et rapide



**Totally recyclable**  
Totalmente reciclable  
Totalemtent recyclable



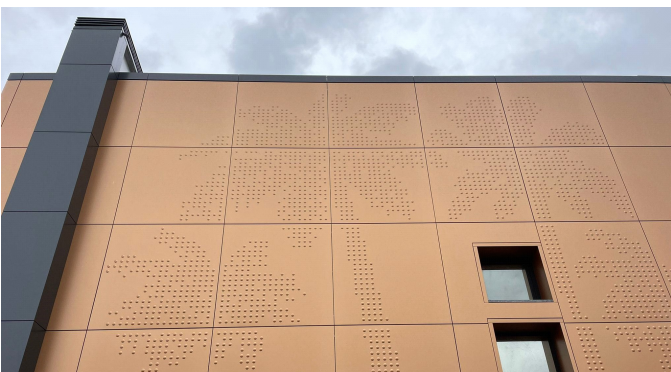
# Mecanizados | Processes | Usinages



Fazemos todo o tipo de mecanizados que favoreçam a integração em qualquer arquitetura e facilitem os múltiplos requisitos estéticos.

We do all kind of machining, benefiting integration into any architecture and making adhering to multiple aesthetic requirements possible.

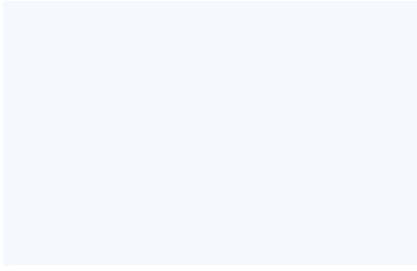
Nous faisons toutes sortes d'usinages favorisant l'intégration dans n'importe quel type d'architecture et facilitant les nombreuses obligations esthétiques.



## Cores Sólidas

## Solid Colors

## Couleurs Solides



FB-401

Arctic White



FB-411

Traffic Red



FB-412

Ultramarine Blue



FB-413

Traffic White



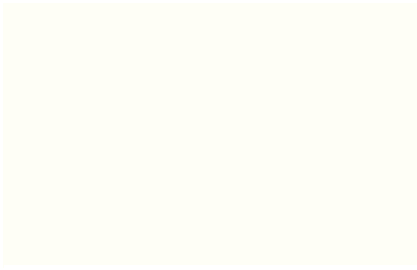
FB-415

Black



FB-417

Umbra Grey



FB-420

Pure White



FB-430

Natural Blue



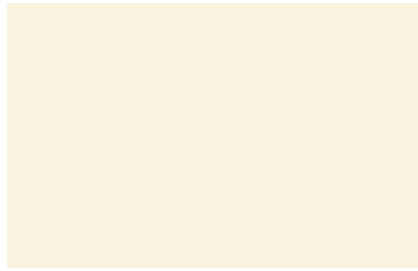
FB-439

Light Grey



FB-451

Black Grey



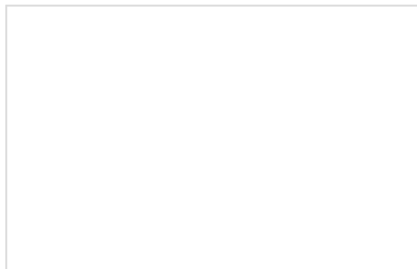
FB-455

Cream



FB-458

Mouse Grey



FB-459

Signal White



FB-473

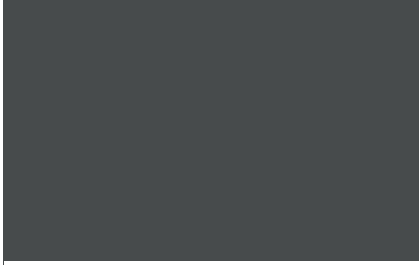
Steel Blue



FB-478

Anthracite Grey





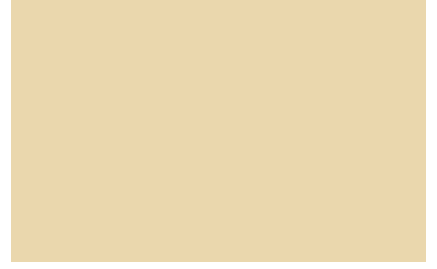
FB-469

Iron Grey



FB-484

Yellow Green



FB-485

Ivory



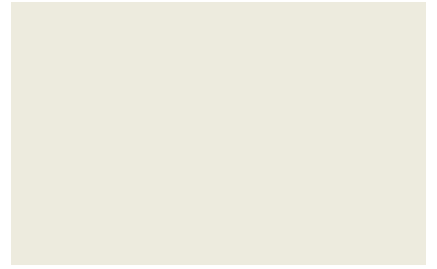
FB-487

Dark Green



FB-488

Deep Red



FB-492

Grey White



FB-493

Traffic Yellow



FB-494

Brown



FB-495

Orange



FB-498

Blood Red



FB-4A5

Dusty Grey



FB-4E3

Graphite Grey

## Cores Metálicas

## Metallic Colors

## Couleurs Métallisées



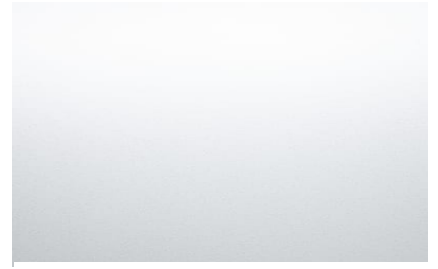
FB-400

White Metallic



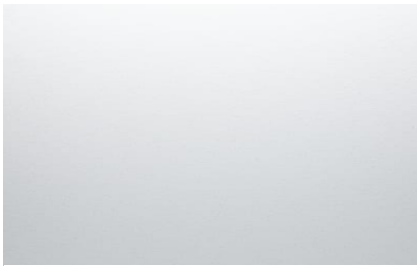
FB-402

Grey Metallic



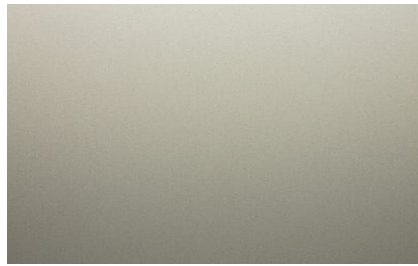
FB-403

Silver Metallic



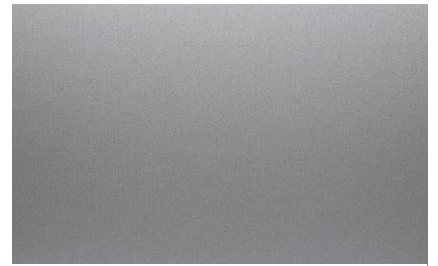
FB-405

Champagne Metallic



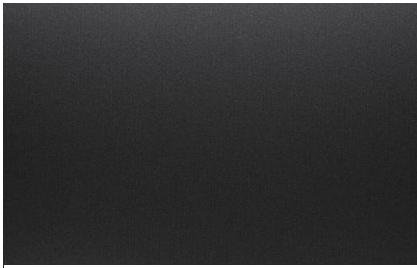
FB-406

Bronze Metallic



FB-407

Titanium Metallic



FB-408

Carbon



FB-409

Blue Metallic



FB-410

Jade Green



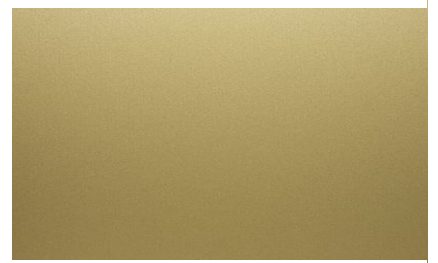
FB-414

Copper Metallic



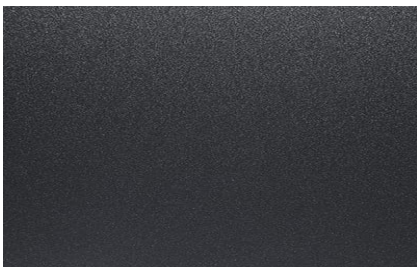
FB-450

Terracotta



FB-454

Gold Metallic



FB-483

Dark Grey



FB-4D7

Intense Copper

## Acabamentos em Madeira

## Wood Finishes

## Finitions Bois



FB-W13 Straw Chestnut Sense



FB-W14 Autumn Chestnut Sense



FB-W15 Mountain Oak Sense

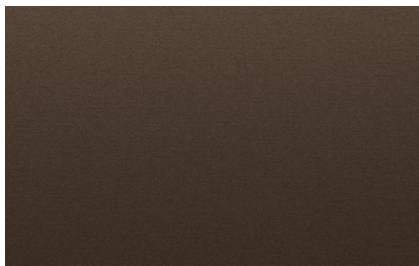


FB-W16 Mocha Oak Sense

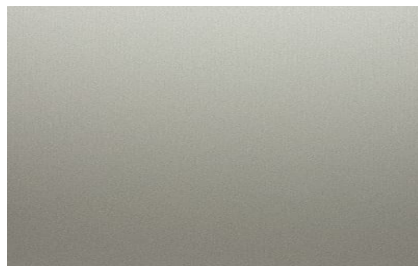


FB-W17 Bark Chestnut Sense

## Anodic



FB-4B3 Anodic Shade



FB-E02 Anodic Light



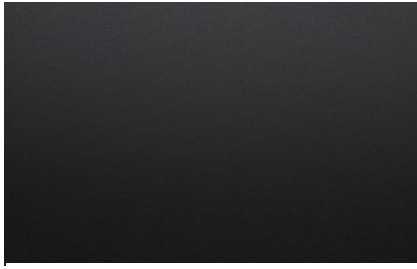
FB-E03 Anodic Dark



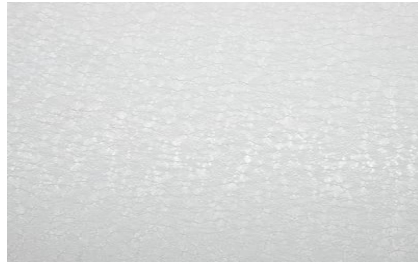
## Acabamentos Especiais

## Special Finishes

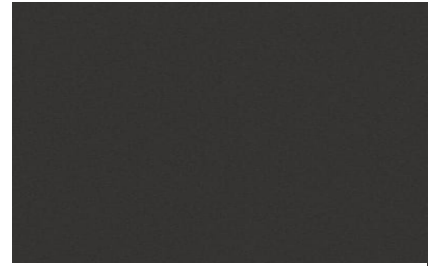
## Finitions Spéciales



FB-425 Ultramatt Black



FB-4C3 Textured White



FB-4D5 Grain Anthracite



FB-4D8 Golden Sand



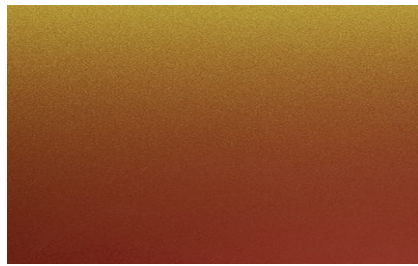
FB-4E9 Rugged Black



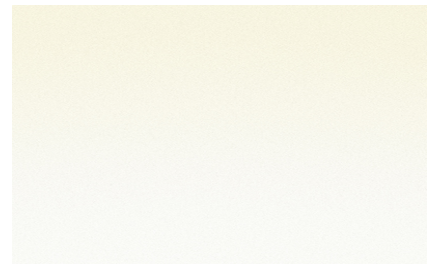
FB-4F1 High Gloss Black



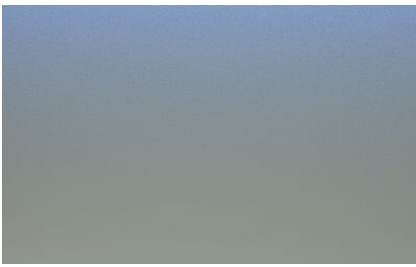
FB-M01 Natural Mirror



FB-S08 Sunset



FB-S10 Golden Pearl



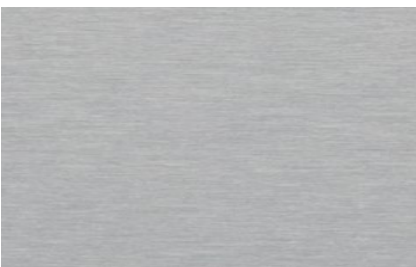
FB-S12 Stellar Blue



FB-GR3 Gallaecia Sense



FB-TR2 Matte Travertine



FB-449 Natural Brushed



FB-B01 Apollo Brushed Metallic



FB-B03 Discovery Brushed Metallic



FB-B04 Soyuz Brushed Metallic



FB-B05 Ariane Brushed Metallic



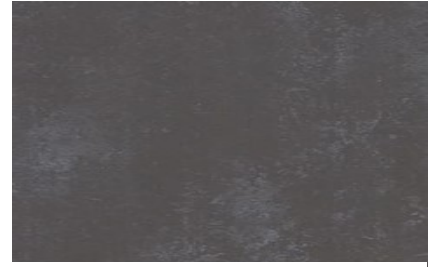
FB-C11 Neo Corten



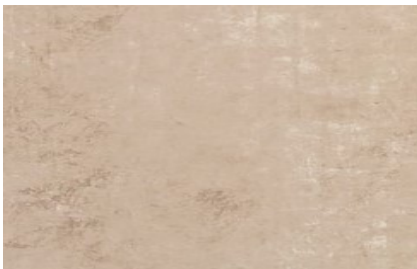
FB-H01 Dry Concrete



FB-H02 Slate Concrete



FB-H03 Basalt Concrete



FB-P01 Symphony Urban



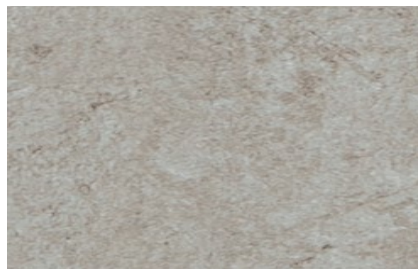
FB-P03 Venetian Theater



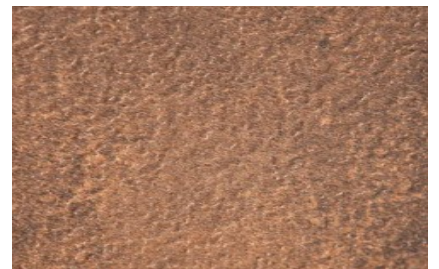
FB-P04 Namibia Ambar



FB-P12 Tromso Winter



FB-ST3 Corbel Sense



FB-CT3 West Corten Sense



FB-PC1 Palatino Sense



FB-PC4 Capri Sense

# Sistema de fixação

## Fixation system

## Systeme de fixation



O sistema de fixação **FIXIN®** para cassetes em fachadas ventiladas é uma inovação que possibilita a aplicação do painel **FIXBOND®** no revestimento de fachadas novas ou na reabilitação de edifícios antigos.

Com este sistema passamos a disponibilizar a todos os instaladores de painel compósito de alumínio facilidade, versatilidade e velocidade na sua instalação.

Esta união de materiais dota o painel compósito de excelentes propriedades mecânicas: alta resistência aos choques, elevada rigidez e reduzido peso.

The **FIXIN®** fixing system for cassettes in ventilated facades is an innovation that allows the application of the **FIXBOND®** panel, in coating new facades or in the rehabilitation of old buildings.

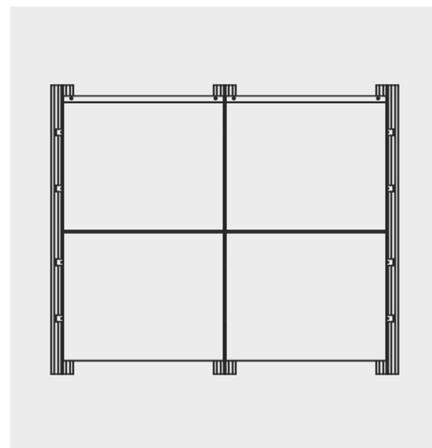
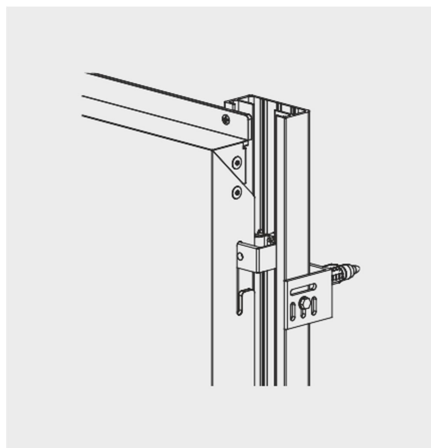
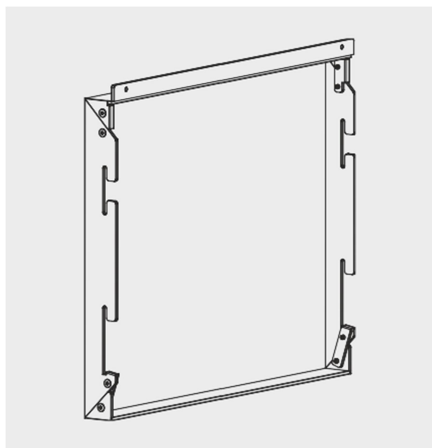
With this system we make available to all aluminum composite panel installers ease, versatility and speed in their installation.

This joining of materials endows the composite panel with excellent mechanical properties: high shock resistance, high rigidity and low weight.

Le système de fixation **FIXIN®** pour les cassetes en façades ventilées est une innovation que permet l'application du panneau **FIXBOND®** dans le revêtement de nouvelles façades ou la réhabilitation des vieux bâtiments.

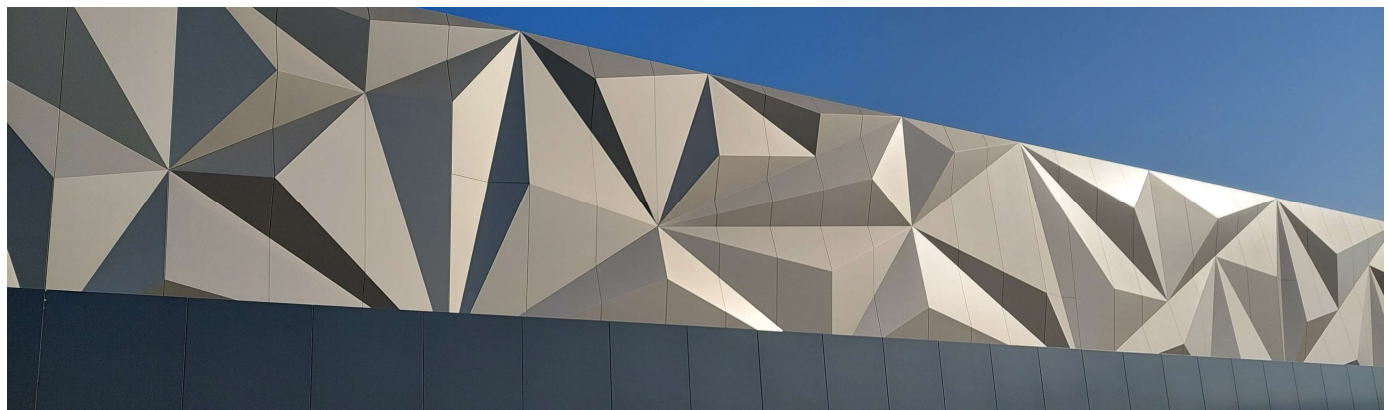
Avec ce système, nous avons mis à la disposition de tous les installateurs de panneau composite en aluminium, facilité, versatilité et vitesse dans leur installation.

Cette union de matériaux dote le panneau composite d'excellentes propriétés mécaniques, haute résistance au choc, rigidité élevée et un poids réduit.





BY MERCANTLIS  
**FIXbond**<sup>®</sup>  
ALUMINIUM COMPOSITE PANEL



Estrada Nacional 109, nº1295 | 2415-199 Regueira de Pontes | Leiria | Portugal  
Telef.: +351 244 833 698 | Tlm.: +351 919 922 263 | aeral@mercantlis.com

[www.fixbond.pt](http://www.fixbond.pt)